

営業実績について

令和5年3月

【3月利用者総計】 261,741人（令和1年比 120%、+43,962人）（目標比 117%、+38,441人）

【3月自社線総計】 249,920人（令和1年比 119%、+39,677人）（目標比 116%、+34,220人）

【自社線日常型】

日常型合計は、167,536人（令和1年比 110%、+15,825人）うち、通学定期は、66,044人（令和1年比 117%、+9,414人）、通勤定期は、63,858人（令和1年比 100%、- 82人）、回数券は、28,175人（令和1年比 113%、+3,144人）

【自社線非日常型】

91,843人（令和1年比 142%、+27,201人）でした。

【3月連絡運輸総計】 11,821人（令和1年比 157%、+4,285人）（目標比 156%、+4,221人）

令和4年度 主要計数①全体

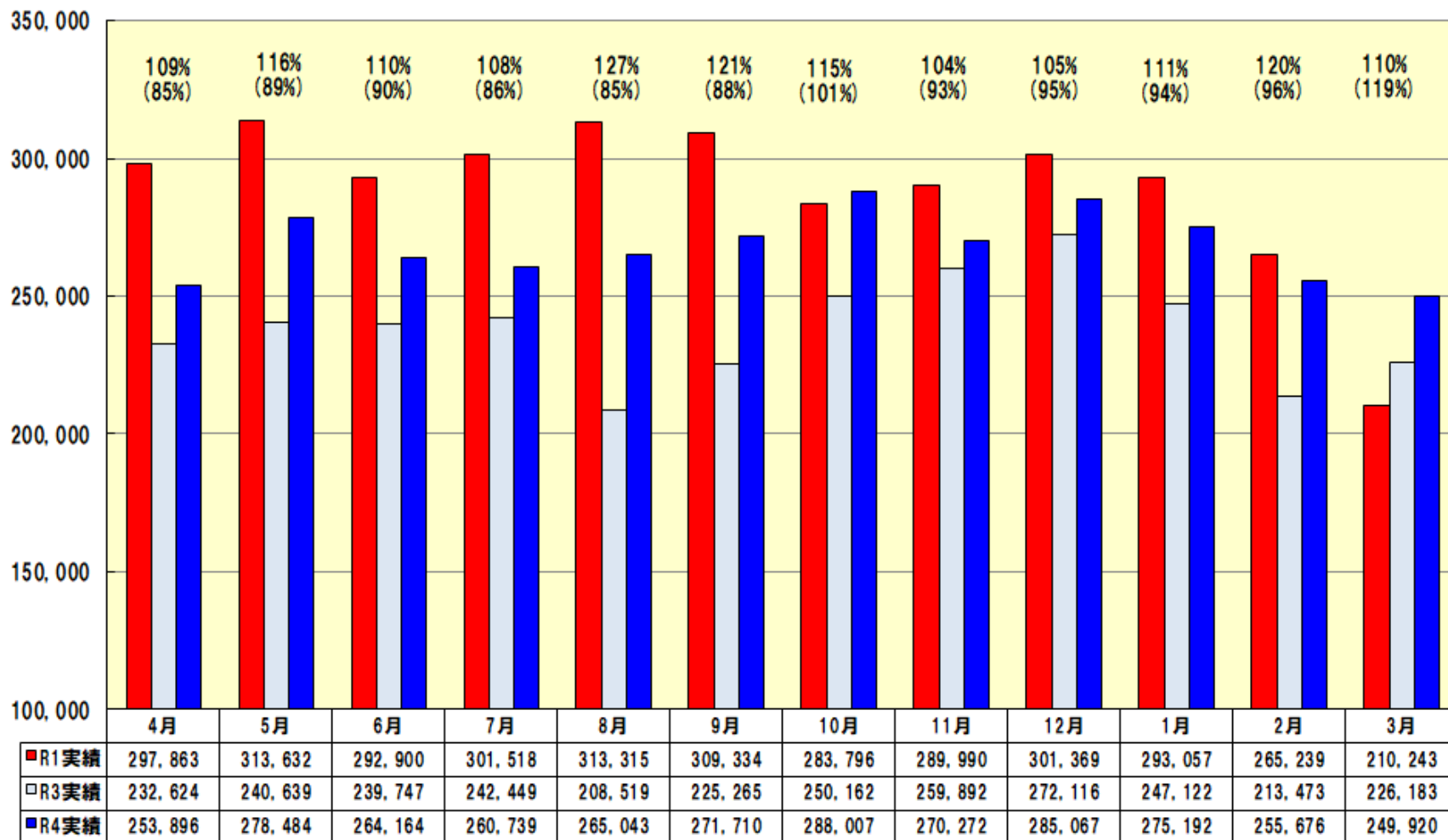
| | | 上期 | 10月 | 11月 | 12月 | 1月 | 2月 | 3月 | 計 | |
|-------|--------|-----------|-----------|---------|---------|---------|---------|---------|-----------|-----------|
| 輸送人員 | 全体実績 | 1,683,271 | 303,708 | 284,871 | 297,688 | 290,657 | 269,269 | 261,741 | 3,391,205 | |
| | 全体目標 | 1,680,590 | 280,700 | 279,020 | 279,750 | 269,630 | 237,010 | 223,300 | 3,250,000 | |
| | R3全体実績 | 1,462,351 | 262,739 | 272,192 | 283,443 | 260,390 | 224,498 | 237,414 | 3,003,027 | |
| | R3対比 | 115% | 116% | 105% | 105% | 112% | 120% | 110% | 113% | |
| | R1全体実績 | 1,912,770 | 297,058 | 303,034 | 312,174 | 306,296 | 275,715 | 217,779 | 3,624,826 | |
| | R1対比 | 88% | 102% | 94% | 95% | 95% | 98% | 120% | 94% | |
| | 自社線 | 実績 | 1,594,036 | 288,007 | 270,272 | 285,067 | 275,192 | 255,676 | 249,920 | 3,218,170 |
| | | 目標 | 1,595,200 | 267,500 | 265,800 | 268,800 | 256,200 | 226,400 | 215,700 | 3,095,600 |
| | | R3実績 | 1,389,243 | 250,162 | 259,892 | 272,116 | 247,122 | 213,473 | 226,183 | 2,858,191 |
| | | R3対比 | 115% | 115% | 104% | 105% | 111% | 120% | 110% | 113% |
| | | R1実績 | 1,828,562 | 284,039 | 289,990 | 301,369 | 293,057 | 265,239 | 210,243 | 3,472,499 |
| | | R1対比 | 87% | 101% | 93% | 95% | 94% | 96% | 119% | 92.7% |
| | 連絡 | 実績 | 89,235 | 15,701 | 14,599 | 12,621 | 15,465 | 13,593 | 11,821 | 173,035 |
| | | 目標 | 85,390 | 13,200 | 13,220 | 10,950 | 13,430 | 10,610 | 7,600 | 154,400 |
| | | R3実績 | 73,108 | 12,577 | 12,300 | 11,327 | 13,268 | 11,025 | 11,231 | 144,836 |
| | | R3対比 | 122% | 125% | 119% | 111% | 117% | 123% | 105% | 119% |
| | | R1実績 | 84,208 | 13,019 | 13,044 | 10,805 | 13,239 | 10,476 | 7,536 | 152,327 |
| | | R1対比 | 106% | 121% | 112% | 117% | 117% | 130% | 157% | 114% |
| 日常生活型 | 全体実績 | 1,182,159 | 202,181 | 199,570 | 204,297 | 202,387 | 180,920 | 167,536 | 2,339,050 | |
| | 全体目標 | 1,146,110 | 199,810 | 194,800 | 194,780 | 191,350 | 165,160 | 157,200 | 2,249,210 | |
| | R3全体実績 | 1,110,495 | 195,117 | 192,528 | 193,690 | 189,681 | 164,233 | 158,564 | 2,204,308 | |
| | R3対比 | 106% | 104% | 104% | 105% | 107% | 110% | 106% | 106% | |
| | R1全体実績 | 1,201,076 | 198,939 | 198,271 | 199,850 | 202,727 | 180,608 | 151,711 | 2,333,182 | |
| | R1対比 | 98% | 102% | 101% | 102% | 100% | 100% | 110% | 100% | |
| | 自社線 | 実績 | 1,105,660 | 189,591 | 187,563 | 193,957 | 189,521 | 169,813 | 158,077 | 2,194,182 |
| | | 目標 | 1,076,100 | 188,800 | 183,900 | 186,300 | 180,200 | 156,400 | 151,000 | 2,122,700 |
| | | R3実績 | 1,047,049 | 184,056 | 182,030 | 184,345 | 178,208 | 154,619 | 149,051 | 2,079,358 |
| | | R3対比 | 106% | 103% | 103% | 105% | 106% | 110% | 106% | 106% |
| | | R1実績 | 1,132,028 | 188,083 | 187,517 | 191,484 | 191,732 | 171,959 | 145,601 | 2,208,404 |
| | | R1対比 | 98% | 101% | 100% | 101% | 99% | 99% | 109% | 99% |
| | 連絡 | 実績 | 76,499 | 12,590 | 12,007 | 10,340 | 12,866 | 11,107 | 9,459 | 144,868 |
| | | 目標 | 70,010 | 11,010 | 10,900 | 8,480 | 11,150 | 8,760 | 6,200 | 126,510 |
| | | R3実績 | 63,446 | 11,061 | 10,498 | 9,345 | 11,473 | 9,614 | 9,513 | 124,950 |
| | | R3対比 | 121% | 114% | 114% | 111% | 112% | 116% | 99% | 116% |
| | | R1実績 | 69,048 | 10,856 | 10,754 | 8,366 | 10,995 | 8,649 | 6,110 | 124,778 |
| | | R1対比 | 111% | 116% | 112% | 124% | 117% | 128% | 155% | 116% |
| 非日常型 | 全体実績 | 501,112 | 101,527 | 85,301 | 93,391 | 88,270 | 88,349 | 94,205 | 1,052,155 | |
| | 全体目標 | 534,480 | 80,890 | 84,220 | 84,970 | 78,280 | 71,850 | 66,100 | 1,000,790 | |
| | R3全体実績 | 351,856 | 67,622 | 79,664 | 89,753 | 70,709 | 60,265 | 78,850 | 798,719 | |
| | R3対比 | 142% | 150% | 107% | 104% | 125% | 147% | 119% | 132% | |
| | R1全体実績 | 711,694 | 98,119 | 104,763 | 112,324 | 103,569 | 95,107 | 66,068 | 1,291,644 | |
| | R1対比 | 70.4% | 103% | 81% | 83% | 85% | 93% | 143% | 81% | |
| | 自社線 | 実績 | 488,376 | 98,416 | 82,709 | 91,110 | 85,671 | 85,863 | 91,843 | 1,023,988 |
| | | 目標 | 519,100 | 78,700 | 81,900 | 82,500 | 76,000 | 70,000 | 64,700 | 972,900 |
| | | R3実績 | 342,194 | 66,106 | 77,862 | 87,771 | 68,914 | 58,854 | 77,132 | 778,833 |
| | | R3対比 | 143% | 149% | 106% | 104% | 124% | 146% | 119% | 131% |
| | | R1実績 | 696,534 | 95,956 | 102,473 | 109,885 | 101,325 | 93,280 | 64,642 | 1,264,095 |
| | | R1対比 | 70% | 103% | 81% | 83% | 85% | 92% | 142% | 81% |
| | 連絡 | 実績 | 12,736 | 3,111 | 2,592 | 2,281 | 2,599 | 2,486 | 2,362 | 28,167 |
| | | 目標 | 15,380 | 2,190 | 2,320 | 2,470 | 2,280 | 1,850 | 1,400 | 27,890 |
| | | R3実績 | 9,662 | 1,516 | 1,802 | 1,982 | 1,795 | 1,411 | 1,718 | 19,886 |
| | | R3対比 | 132% | 205% | 144% | 115% | 145% | 176% | 137% | 142% |
| | | R1実績 | 15,160 | 2,163 | 2,290 | 2,439 | 2,244 | 1,827 | 1,426 | 27,549 |
| | | R1対比 | 84% | 144% | 113% | 94% | 116% | 136% | 166% | 102% |

令和4年度 主要計数②日常型内訳

| | | 上期 | 10月 | 11月 | 12月 | 1月 | 2月 | 3月 | 計 | |
|---------|---------|---------|---------|---------|--------|--------|--------|--------|-----------|-----------|
| (内通学定期) | 全体実績 | 607,340 | 107,888 | 104,880 | 99,416 | 98,774 | 85,580 | 71,144 | 1,175,022 | |
| | 全体目標 | 577,550 | 103,820 | 101,390 | 95,160 | 90,690 | 77,040 | 65,060 | 1,110,710 | |
| | R3全体実績 | 570,958 | 103,044 | 100,588 | 94,896 | 90,120 | 77,622 | 66,800 | 1,104,028 | |
| | R3対比 | 106% | 105% | 104% | 105% | 110% | 110% | 107% | 106% | |
| | R1全体実績 | 602,710 | 107,774 | 104,416 | 97,246 | 97,926 | 83,820 | 59,150 | 1,153,042 | |
| | R1対比 | 101% | 100% | 100% | 102% | 101% | 102% | 120.3% | 102% | |
| | 自社線 | 実績 | 561,260 | 99,908 | 97,740 | 94,016 | 90,914 | 79,280 | 66,044 | 1,089,162 |
| | | 目標 | 534,600 | 96,700 | 94,700 | 90,600 | 84,000 | 72,600 | 62,500 | 1,035,700 |
| | | R3実績 | 534,178 | 96,684 | 94,648 | 90,516 | 83,940 | 72,522 | 62,420 | 1,034,908 |
| | | R3対比 | 105% | 103% | 103% | 104% | 108% | 109% | 106% | 105% |
| | | R1実績 | 560,350 | 100,754 | 97,816 | 92,746 | 91,326 | 79,440 | 56,630 | 1,079,062 |
| | | R1対比 | 100% | 99% | 100% | 101% | 100% | 100% | 117% | 101% |
| | 連絡 | 実績 | 46,080 | 7,980 | 7,140 | 5,400 | 7,860 | 6,300 | 5,100 | 85,860 |
| | | 目標 | 42,950 | 7,120 | 6,690 | 4,560 | 6,690 | 4,440 | 2,560 | 75,010 |
| | | R3実績 | 36,780 | 6,360 | 5,940 | 4,380 | 6,180 | 5,100 | 4,380 | 69,120 |
| | | R3対比 | 125% | 125% | 120% | 123% | 127% | 124% | 116% | 124% |
| | | R1実績 | 42,360 | 7,020 | 6,600 | 4,500 | 6,600 | 4,380 | 2,520 | 73,980 |
| | | R1対比 | 109% | 114% | 108% | 120% | 119% | 144% | 202% | 116% |
| | (内通勤定期) | 全体実績 | 398,530 | 65,370 | 65,558 | 67,954 | 67,342 | 63,692 | 66,798 | 795,244 |
| 全体目標 | | 381,840 | 63,540 | 61,660 | 63,740 | 64,190 | 58,020 | 63,560 | 756,550 | |
| R3全体実績 | | 370,928 | 62,212 | 60,212 | 62,672 | 62,774 | 56,612 | 62,642 | 738,052 | |
| R3対比 | | 107% | 105% | 109% | 108% | 107% | 113% | 107% | 108% | |
| R1全体実績 | | 383,200 | 65,698 | 63,838 | 66,934 | 67,914 | 65,070 | 66,760 | 779,414 | |
| R1対比 | | 104% | 100% | 103% | 101.5% | 99% | 98% | 100.1% | 102% | |
| 自社線 | | 実績 | 375,910 | 62,190 | 62,198 | 64,774 | 64,162 | 60,392 | 63,858 | 753,484 |
| | | 目標 | 362,000 | 60,500 | 58,500 | 61,000 | 60,900 | 54,800 | 60,700 | 718,400 |
| | | R3実績 | 350,708 | 58,732 | 56,732 | 59,192 | 59,054 | 53,132 | 58,862 | 696,412 |
| | | R3対比 | 107% | 106% | 110% | 109% | 109% | 114% | 108% | 108% |
| | | R1実績 | 363,640 | 62,698 | 60,718 | 64,234 | 64,674 | 61,890 | 63,940 | 741,794 |
| | | R1対比 | 103% | 99% | 102% | 101% | 99% | 98% | 100% | 102% |
| 連絡 | | 実績 | 22,620 | 3,180 | 3,360 | 3,180 | 3,180 | 3,300 | 2,940 | 41,760 |
| | | 目標 | 19,840 | 3,040 | 3,160 | 2,740 | 3,290 | 3,220 | 2,860 | 38,150 |
| | | R3実績 | 20,220 | 3,480 | 3,480 | 3,480 | 3,720 | 3,480 | 3,780 | 41,640 |
| | | R3対比 | 112% | 91% | 97% | 91% | 85% | 95% | 78% | 100% |
| | | R1実績 | 19,560 | 3,000 | 3,120 | 2,700 | 3,240 | 3,180 | 2,820 | 37,620 |
| | | R1対比 | 116% | 106% | 108% | 118% | 98% | 104% | 104% | 111% |
| (内回数券) | | 全体実績 | 176,289 | 28,923 | 29,132 | 36,927 | 36,271 | 31,648 | 29,594 | 368,784 |
| | 全体目標 | 186,720 | 32,450 | 31,750 | 35,880 | 36,470 | 30,100 | 28,580 | 381,950 | |
| | R3全体実績 | 168,609 | 29,861 | 31,728 | 36,122 | 36,787 | 29,999 | 29,122 | 362,228 | |
| | R3対比 | 105% | 97% | 92% | 102% | 99% | 105% | 102% | 102% | |
| | R1全体実績 | 215,166 | 25,467 | 30,017 | 35,670 | 36,887 | 31,718 | 25,801 | 400,726 | |
| | R1対比 | 82% | 114% | 97% | 104% | 98% | 100% | 115% | 92% | |
| | 自社線 | 実績 | 168,490 | 27,493 | 27,625 | 35,167 | 34,445 | 30,141 | 28,175 | 351,536 |
| | | 目標 | 179,500 | 31,600 | 30,700 | 34,700 | 35,300 | 29,000 | 27,800 | 368,600 |
| | | R3実績 | 162,163 | 28,640 | 30,650 | 34,637 | 35,214 | 28,965 | 27,769 | 348,038 |
| | | R3対比 | 104% | 96% | 90% | 102% | 98% | 104% | 101% | 101% |
| | | R1実績 | 208,038 | 24,631 | 28,983 | 34,504 | 35,732 | 30,629 | 25,031 | 387,548 |
| | | R1対比 | 81% | 112% | 95% | 102% | 96% | 98% | 113% | 91% |
| | 連絡 | 実績 | 7,799 | 1,430 | 1,507 | 1,760 | 1,826 | 1,507 | 1,419 | 17,248 |
| | | 目標 | 7,220 | 850 | 1,050 | 1,180 | 1,170 | 1,100 | 780 | 13,350 |
| | | R3実績 | 6,446 | 1,221 | 1,078 | 1,485 | 1,573 | 1,034 | 1,353 | 14,190 |
| | | R3対比 | 121% | 117% | 140% | 119% | 116% | 146% | 105% | 122% |
| | | R1実績 | 7,128 | 836 | 1,034 | 1,166 | 1,155 | 1,089 | 770 | 13,178 |
| | | R1対比 | 109% | 171% | 146% | 151% | 158% | 138% | 184% | 131% |

令和4年 自社線実績と前年対比

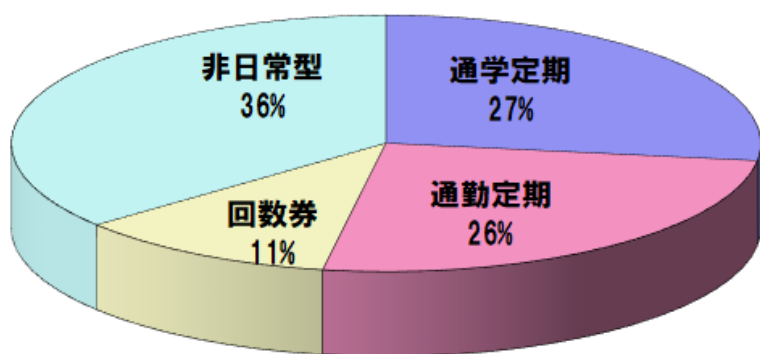
月別（人）



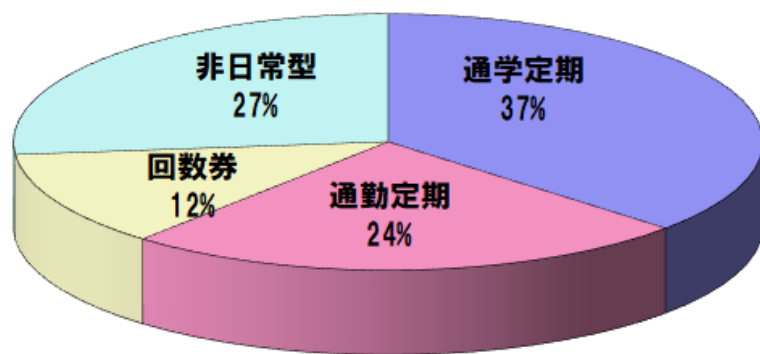
%は前年比、（ ）内は1年度対比

利用目的別内訳

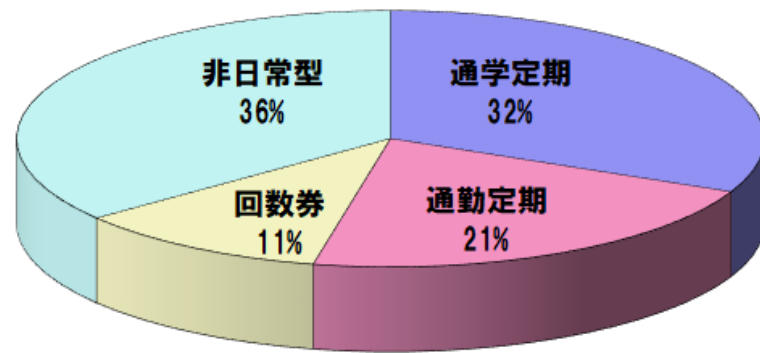
<令和5年3月>



<令和3年度平均>

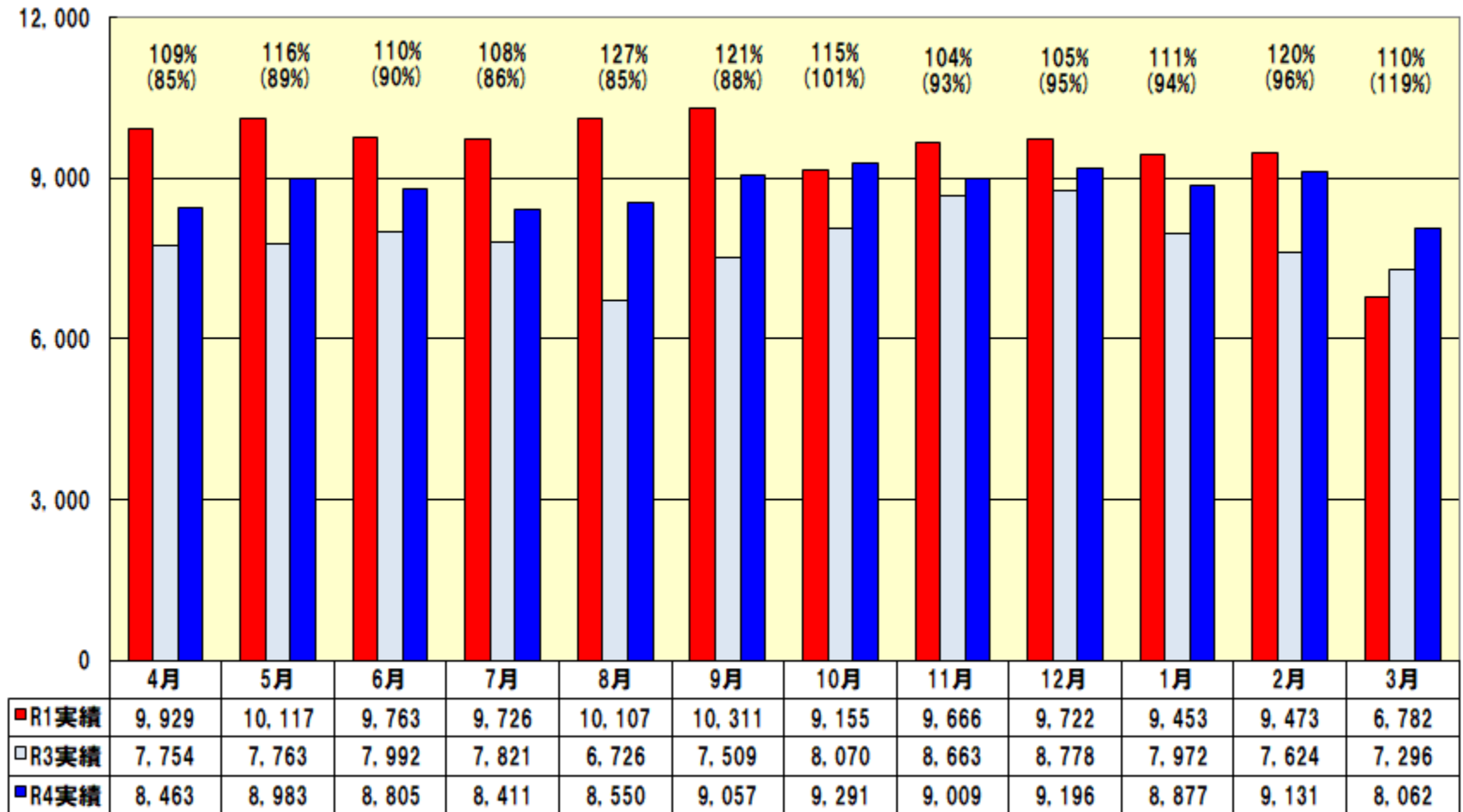


<令和1年度平均>



1日あたり自社線 総輸送人員と前年対比

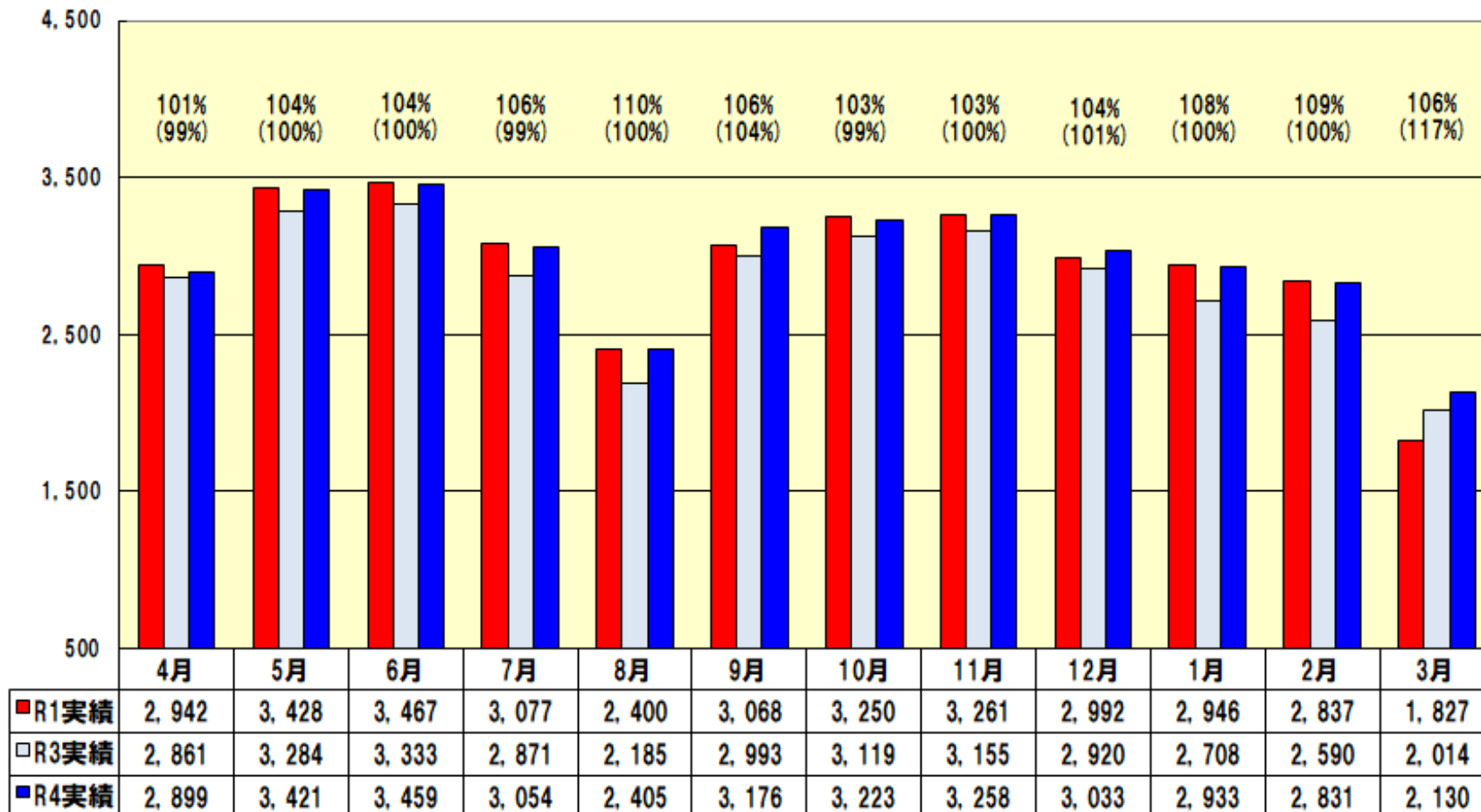
(人)



%は前年比、()内は1年度対比

1日あたり自社線 通学定期乗車人員と前年対比

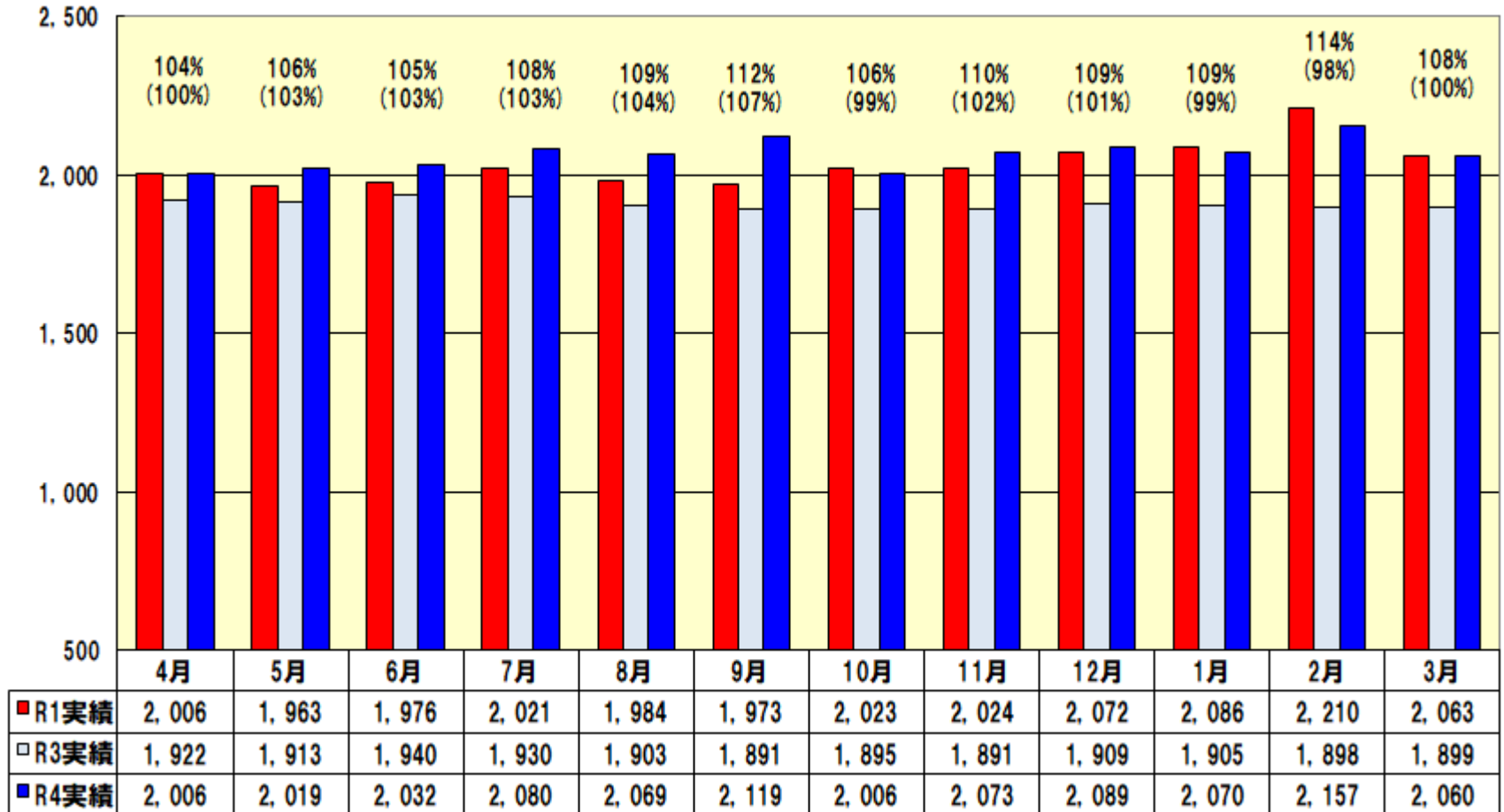
(人)



%は前年比、()内は1年度対比

1日あたり自社線 通勤定期乗車人員と前年対比

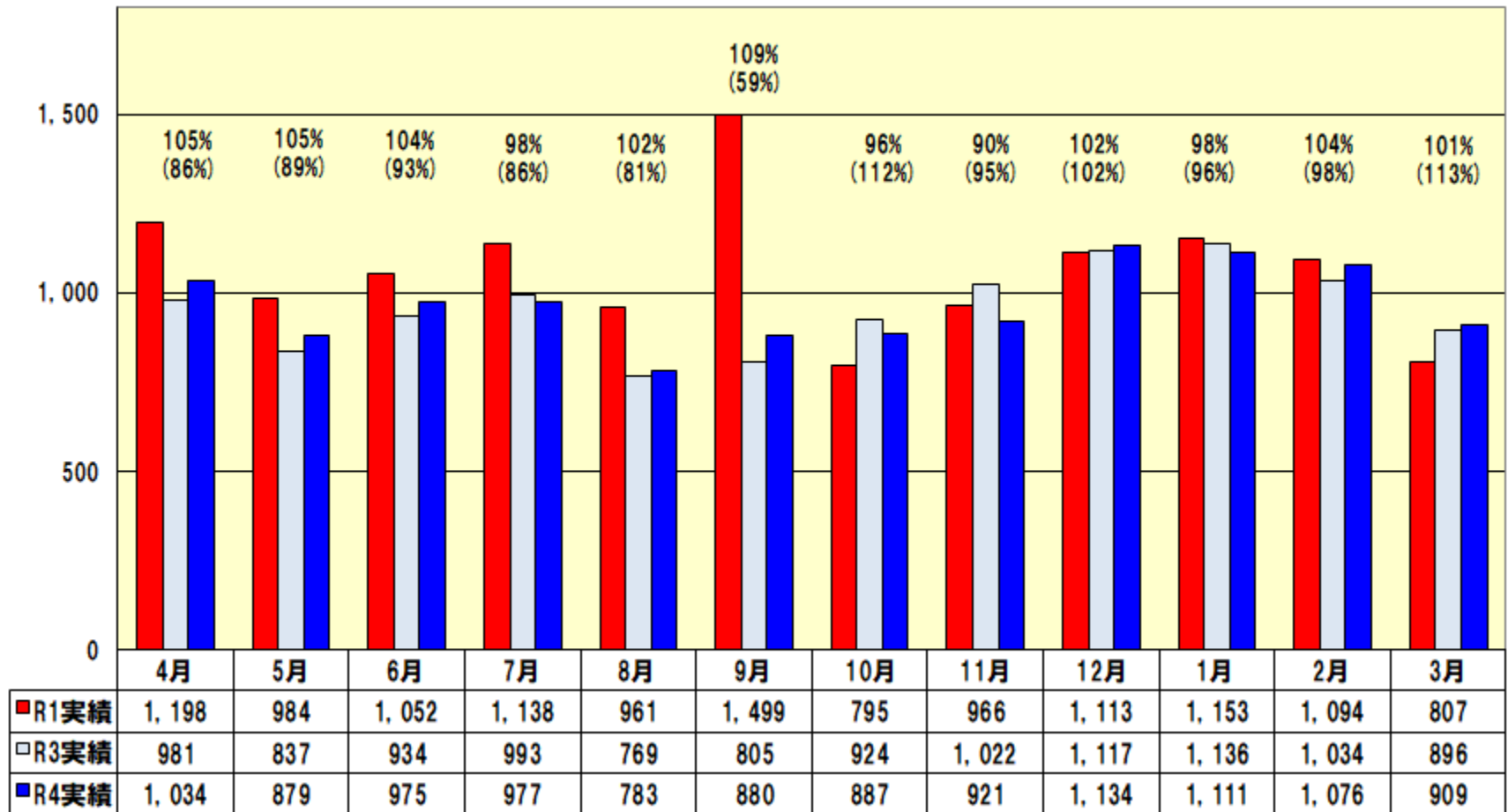
(人)



%は前年比、()内は1年度対比

1日あたり自社線 回数券乗車人員と前年対比

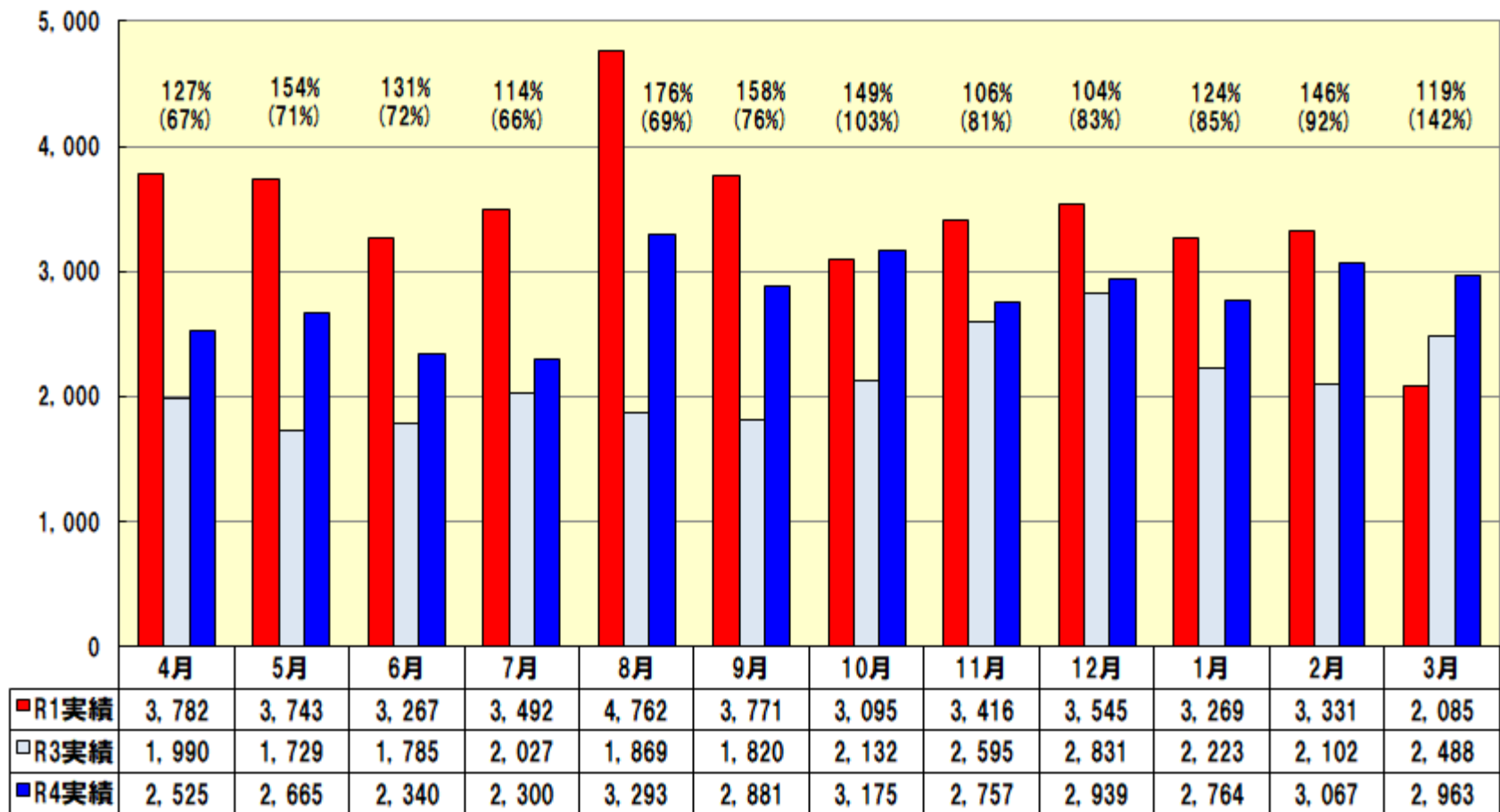
(人)



%は前年比、()内は1年度対比

1日あたり非日常型乗車人員と前年対比

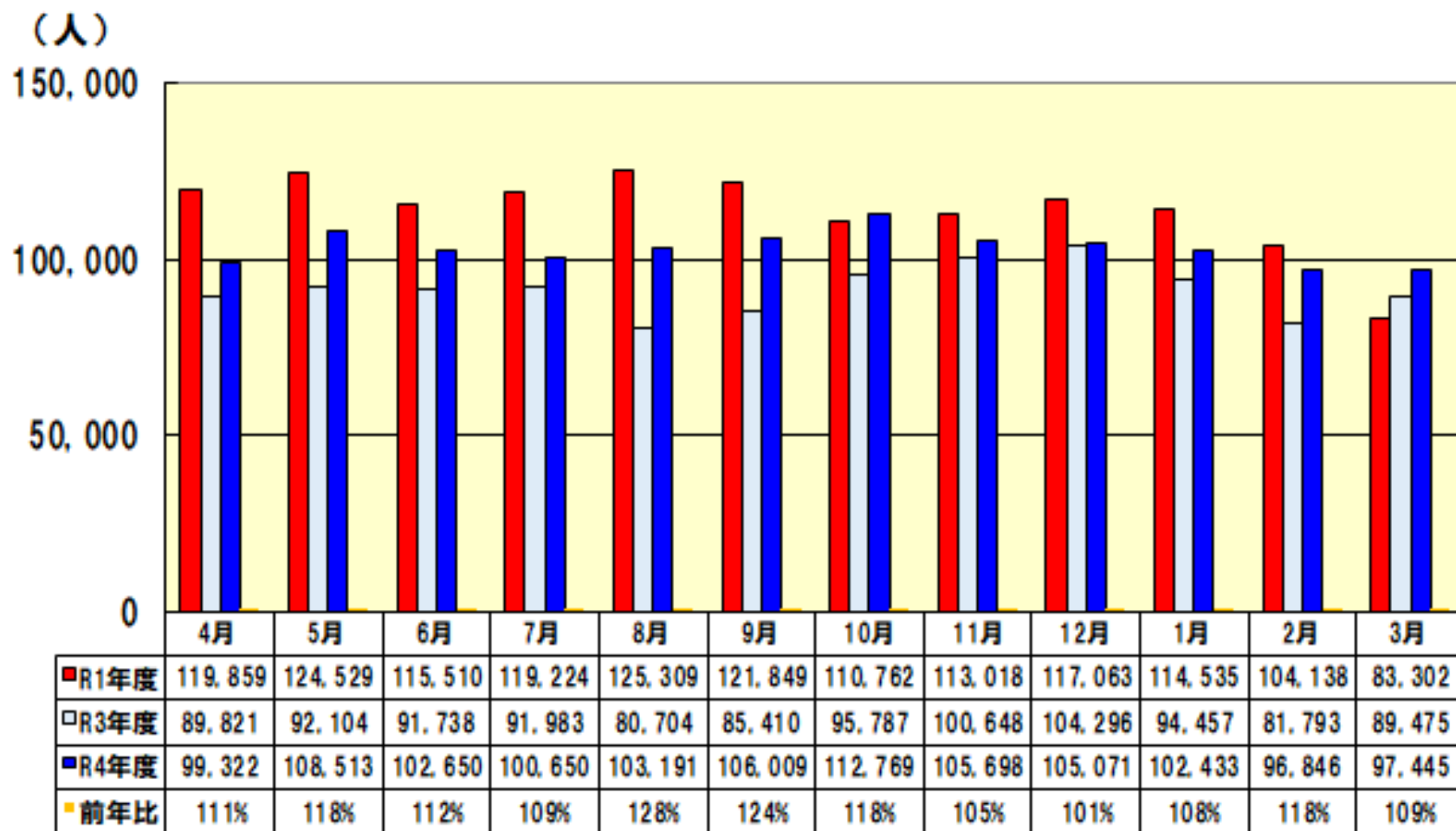
(人)



%は前年比、()内は1年度対比

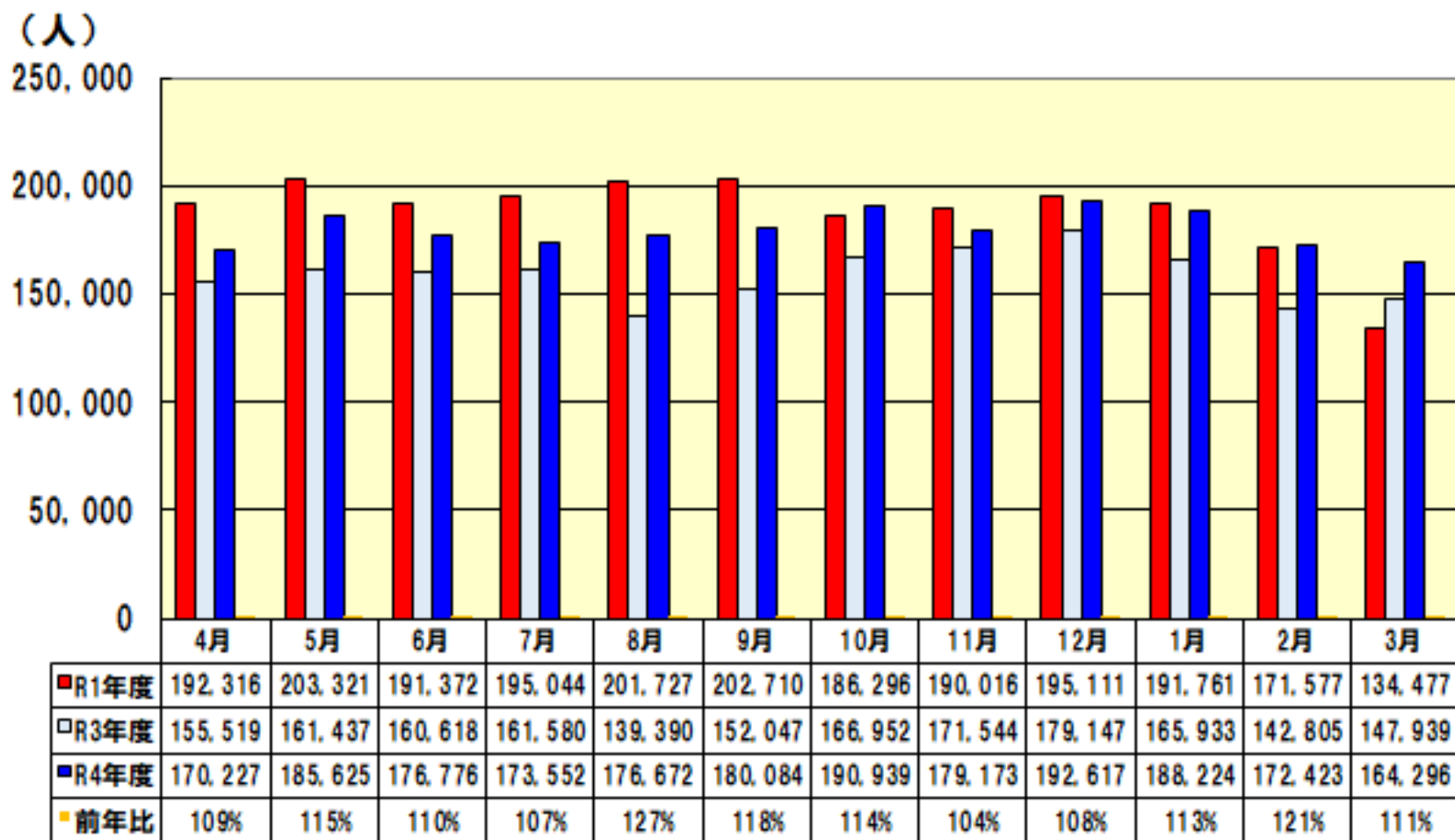
路線別乗車人員

<勝山永平寺線>



路線別乗車人員

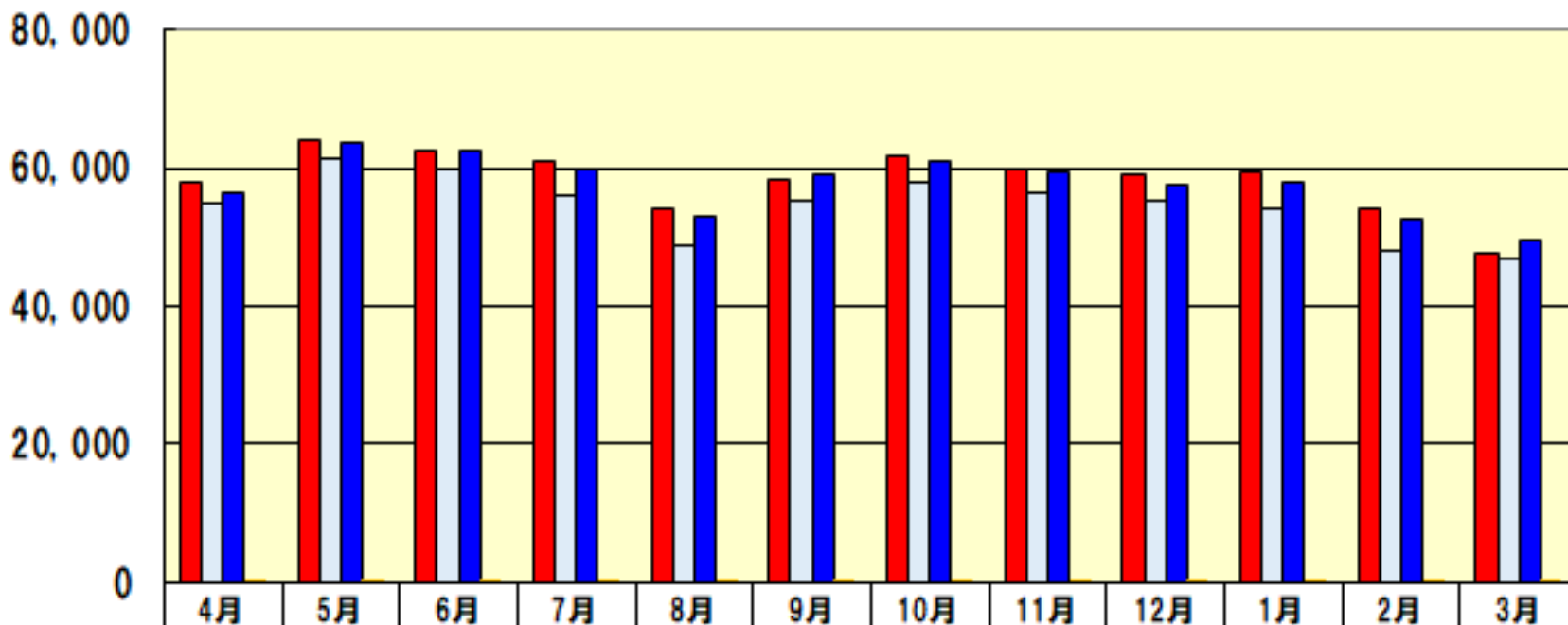
<三国芦原線>



路線別定期乗車人員

<勝山永平寺線>

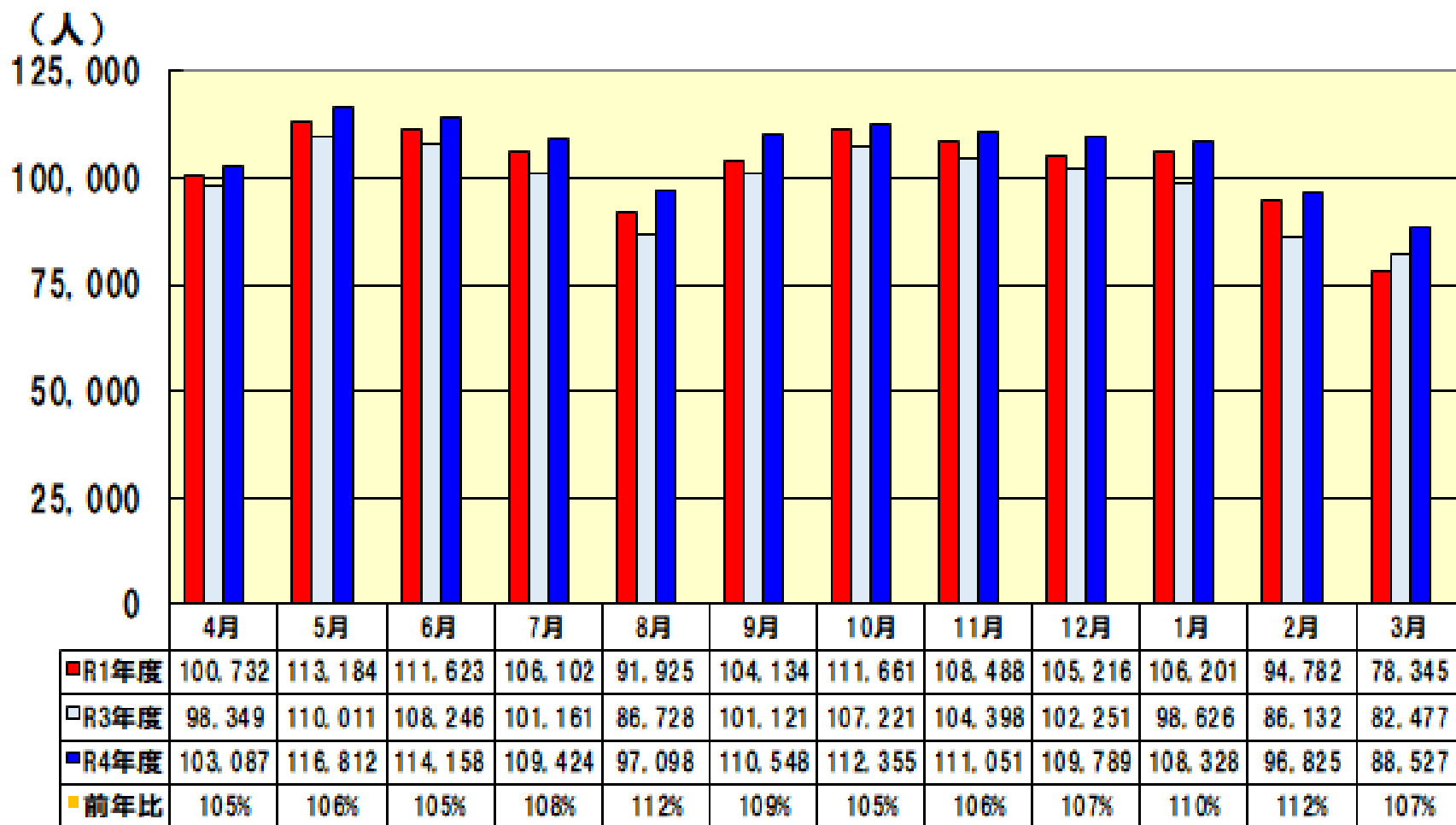
(人)



| | | | | | | | | | | | | |
|-------|--------|--------|--------|--------|--------|--------|--------|--------|--------|--------|--------|--------|
| ■R1年度 | 58,092 | 64,056 | 62,643 | 60,944 | 53,981 | 58,494 | 61,811 | 59,766 | 58,964 | 59,639 | 54,108 | 47,565 |
| □R3年度 | 55,047 | 61,227 | 59,958 | 55,961 | 48,952 | 55,125 | 58,035 | 56,402 | 55,317 | 54,268 | 48,102 | 46,965 |
| ■R4年度 | 56,459 | 63,816 | 62,676 | 59,806 | 52,932 | 59,054 | 60,903 | 59,387 | 57,581 | 57,788 | 52,447 | 49,415 |
| ■前年比 | 103% | 104% | 105% | 107% | 108% | 107% | 105% | 105% | 104% | 106% | 109% | 105% |

路線別定期乗車人員

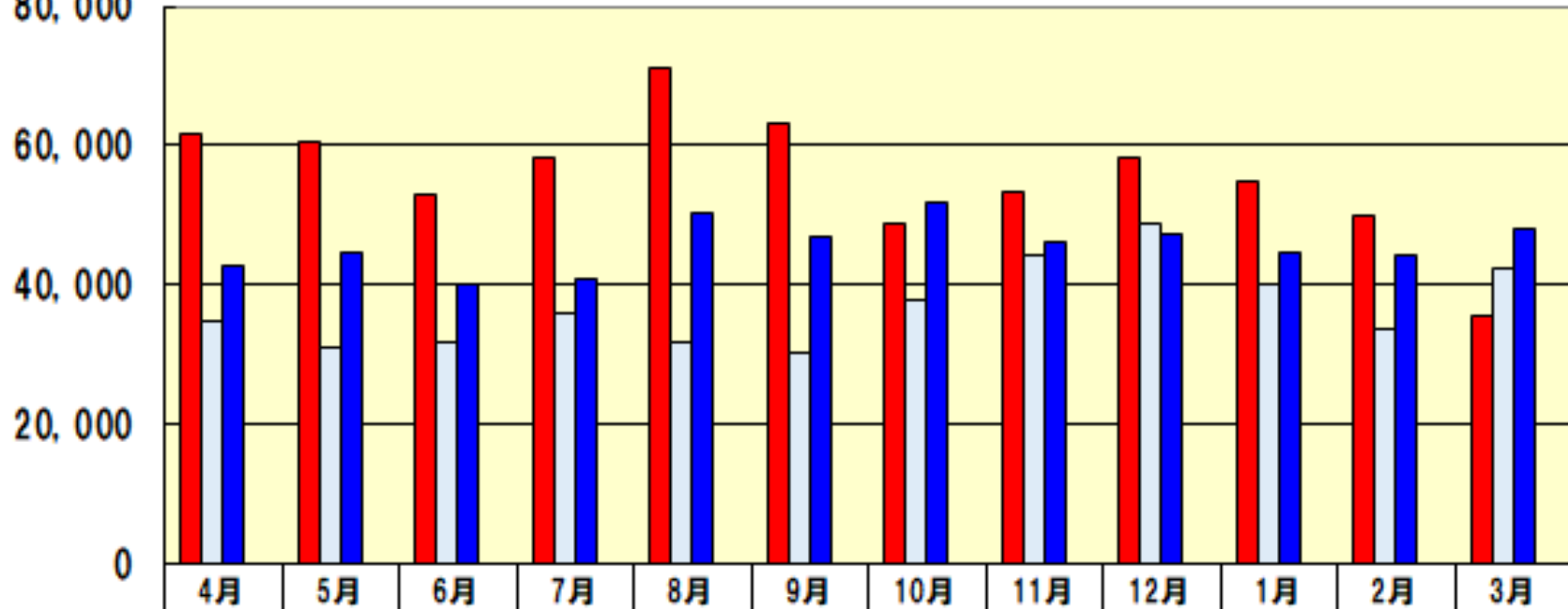
<三国芦原線>



路線別定期外乗車人員

<勝山永平寺線>

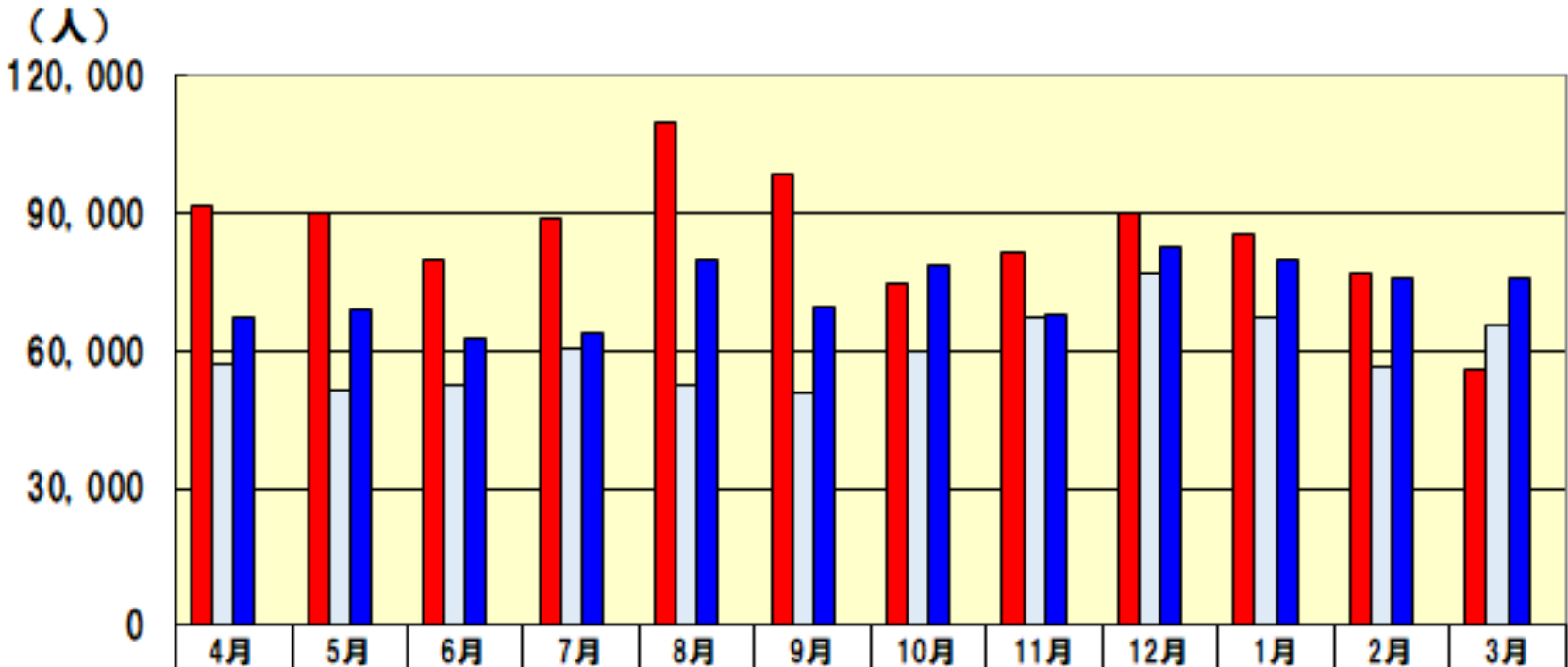
(人)
80,000



| | | | | | | | | | | | | |
|--------|--------|--------|--------|--------|--------|--------|--------|--------|--------|--------|--------|--------|
| ■ R1年度 | 61,767 | 60,473 | 52,867 | 58,280 | 71,328 | 63,355 | 48,951 | 53,252 | 58,099 | 54,896 | 50,030 | 35,737 |
| □ R3年度 | 34,774 | 30,877 | 31,780 | 36,022 | 31,752 | 30,285 | 37,752 | 44,246 | 48,979 | 40,189 | 33,691 | 42,510 |
| ■ R4年度 | 42,863 | 44,697 | 39,974 | 40,844 | 50,259 | 46,955 | 51,866 | 46,311 | 47,490 | 44,645 | 44,399 | 48,030 |
| ■ 前年比 | 123% | 145% | 126% | 113% | 158% | 155% | 137% | 105% | 97% | 111% | 132% | 113% |

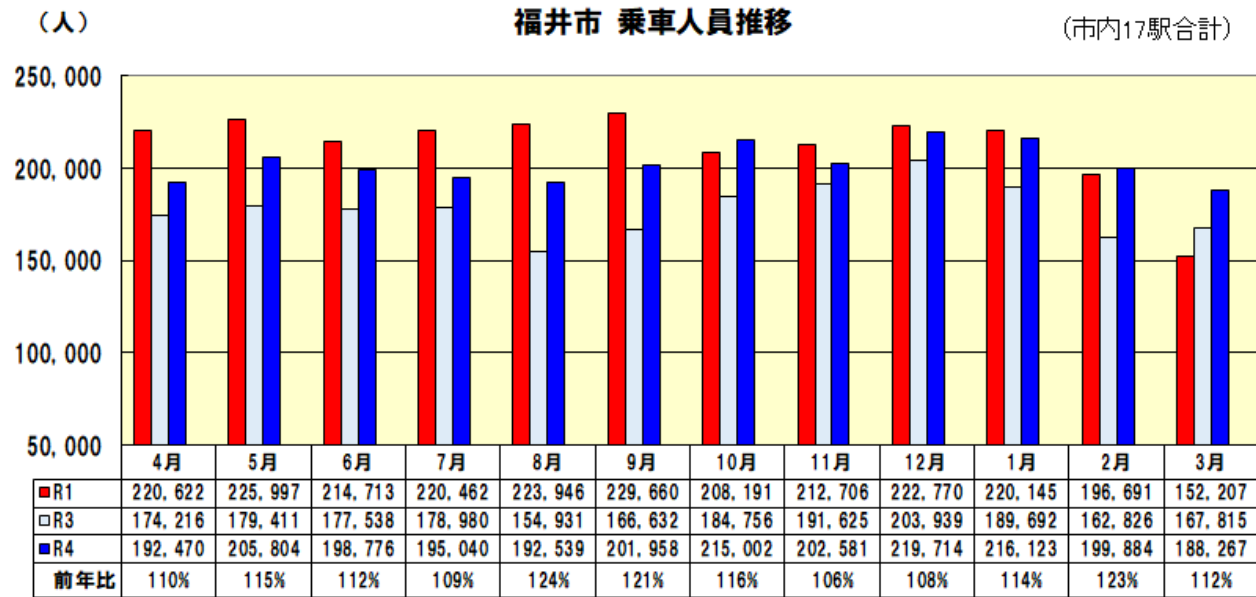
路線別定期外乗車人員

<三国芦原線>



| | 4月 | 5月 | 6月 | 7月 | 8月 | 9月 | 10月 | 11月 | 12月 | 1月 | 2月 | 3月 |
|-------|--------|--------|--------|--------|---------|--------|--------|--------|--------|--------|--------|--------|
| ■R1年度 | 91,584 | 90,137 | 79,749 | 88,942 | 109,802 | 98,576 | 74,635 | 81,528 | 89,895 | 85,560 | 76,795 | 56,132 |
| □R3年度 | 57,170 | 51,426 | 52,372 | 60,419 | 52,662 | 50,926 | 59,731 | 67,146 | 76,896 | 67,307 | 56,673 | 65,462 |
| ■R4年度 | 67,140 | 68,813 | 62,618 | 64,128 | 79,574 | 69,536 | 78,584 | 68,122 | 82,828 | 79,896 | 75,598 | 75,769 |
| ■前年比 | 117% | 134% | 120% | 106% | 151% | 137% | 132% | 101% | 108% | 119% | 133% | 116% |

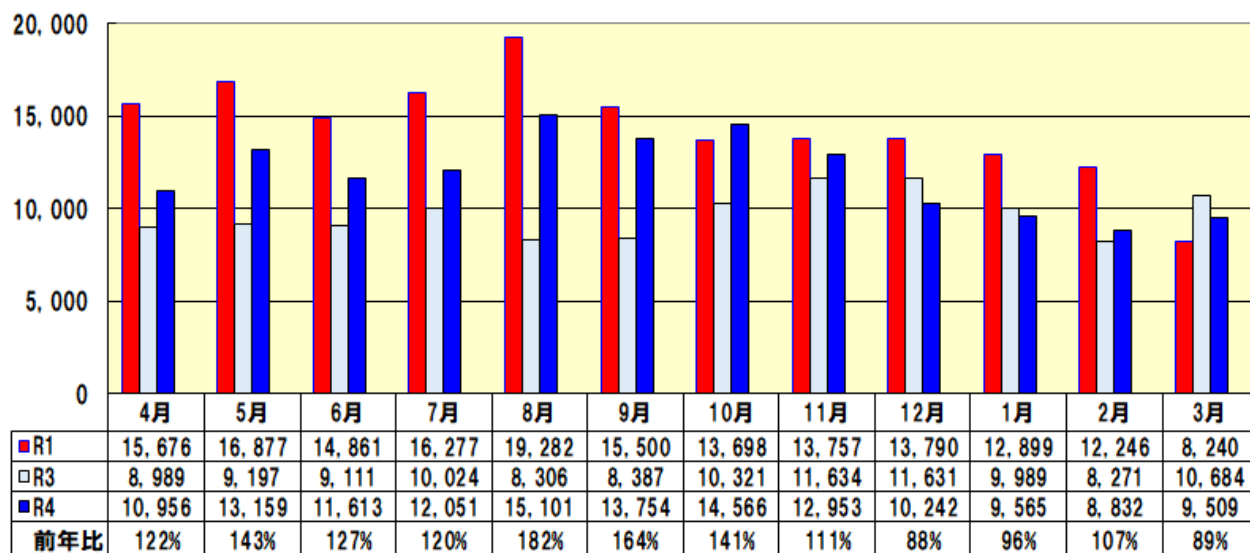
市町別 乗車人員比較



(人)

勝山市 乗車人員前年比

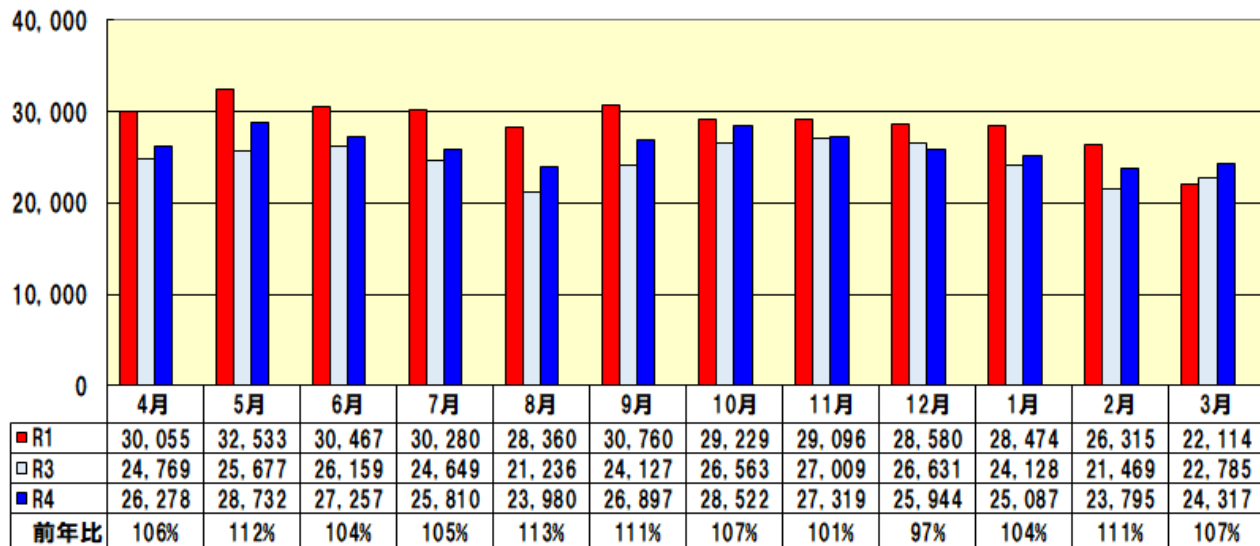
(市内4駅合計)

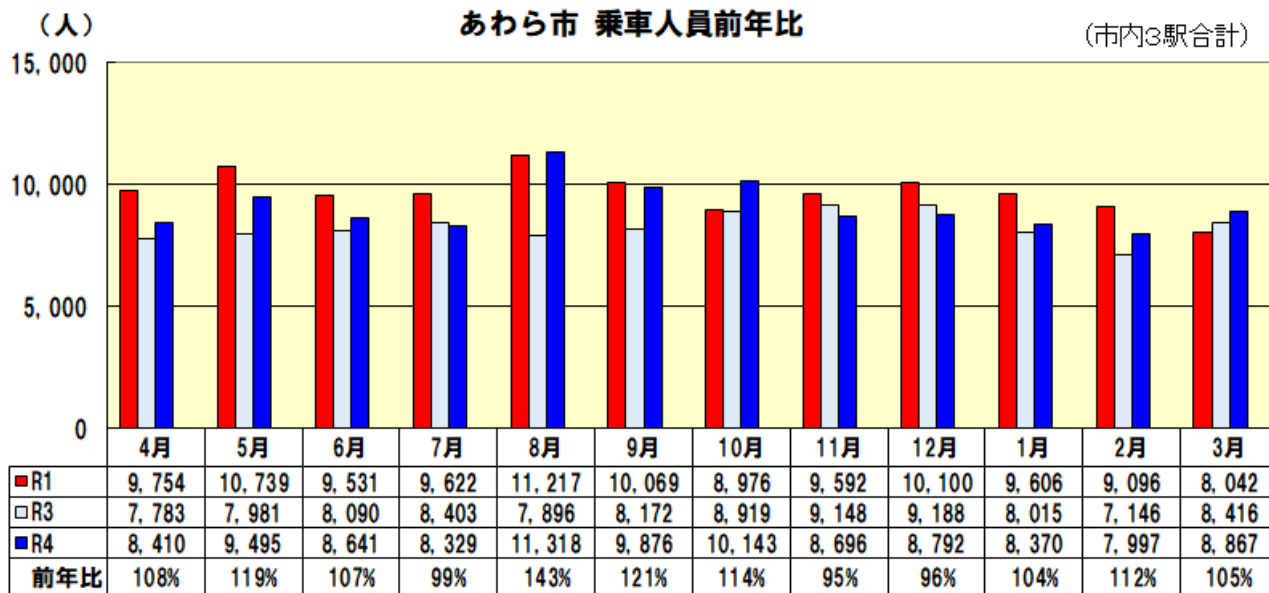
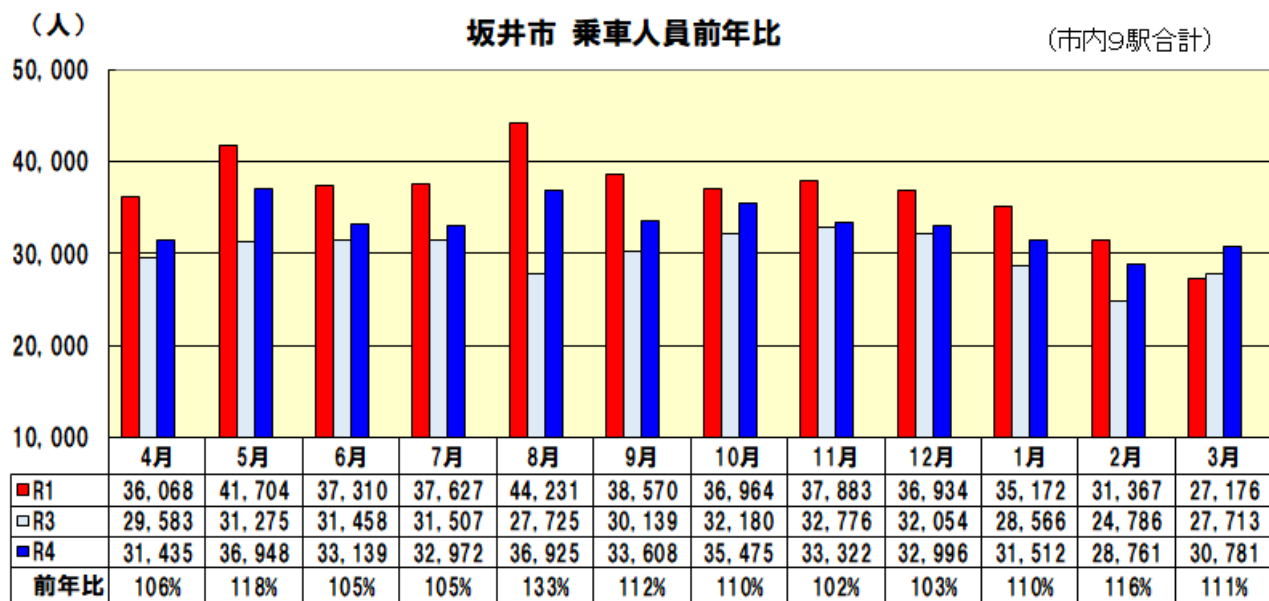


(人)

永平寺町 乗車人員前年比

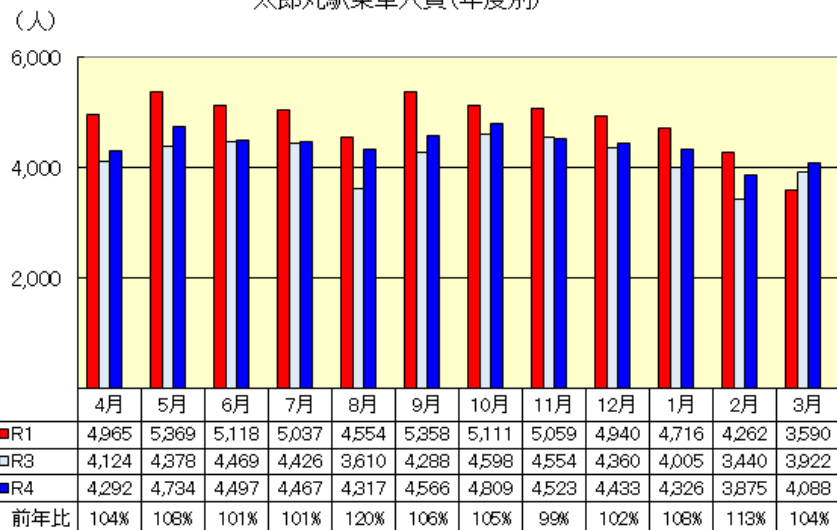
(町内11駅合計)



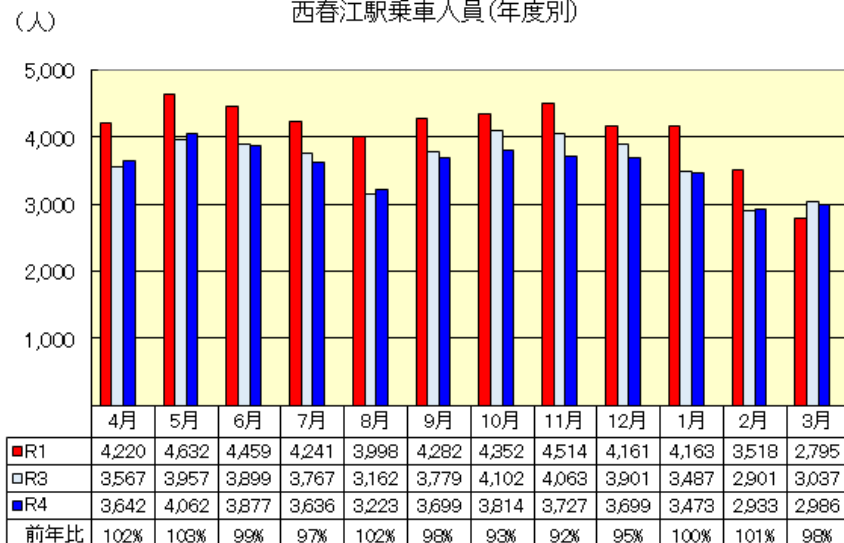


坂井市①

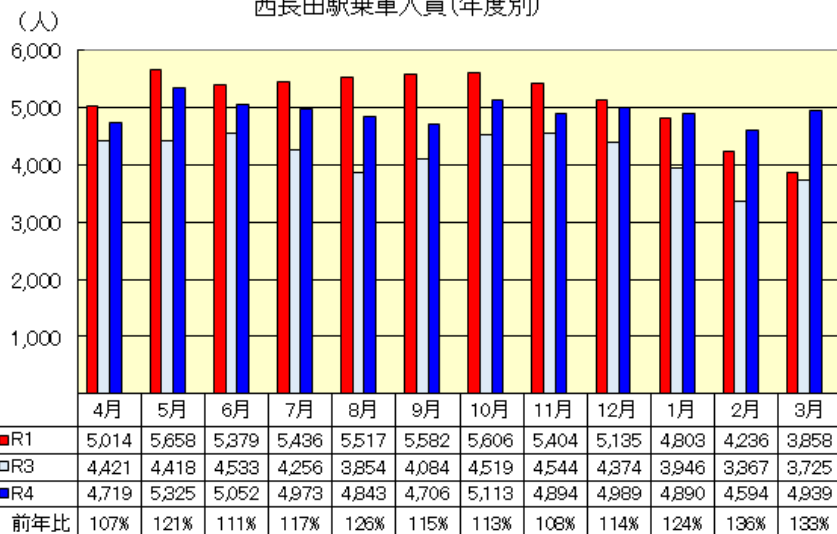
太郎丸駅乗車人員(年度別)



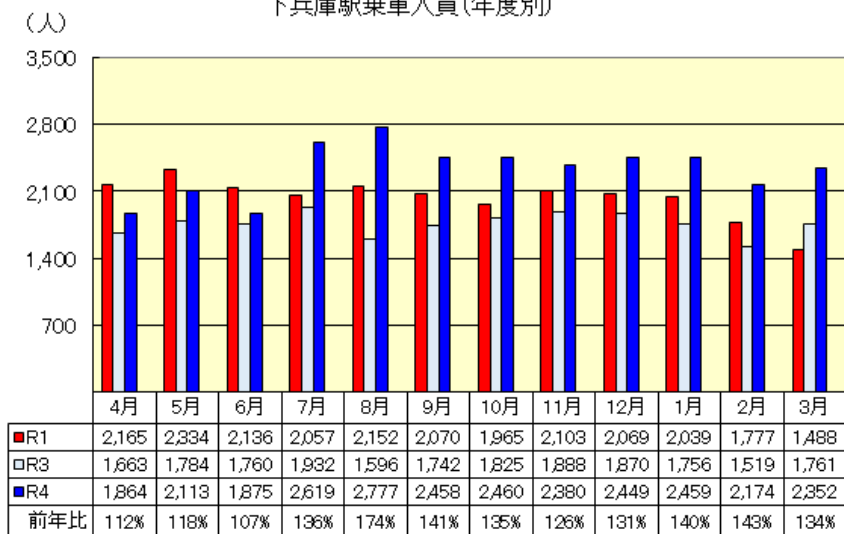
西春江駅乗車人員(年度別)



西長田駅乗車人員(年度別)

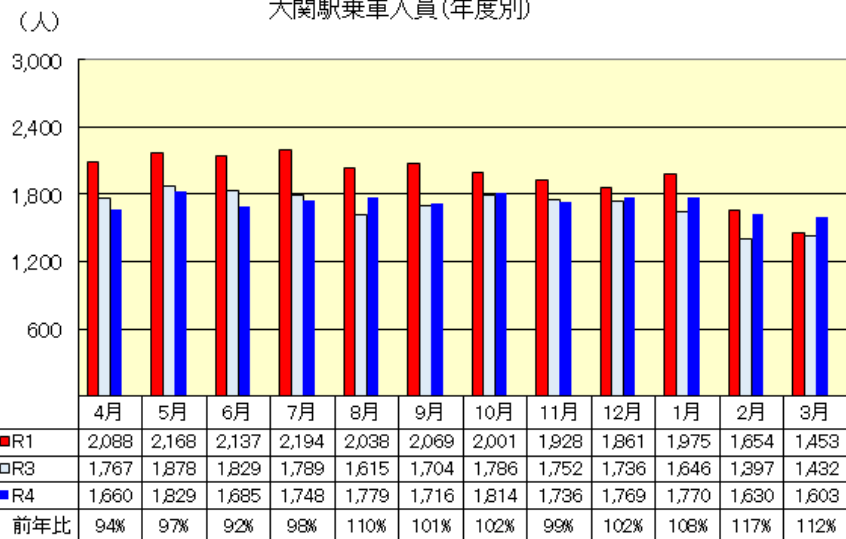


下兵庫駅乗車人員(年度別)

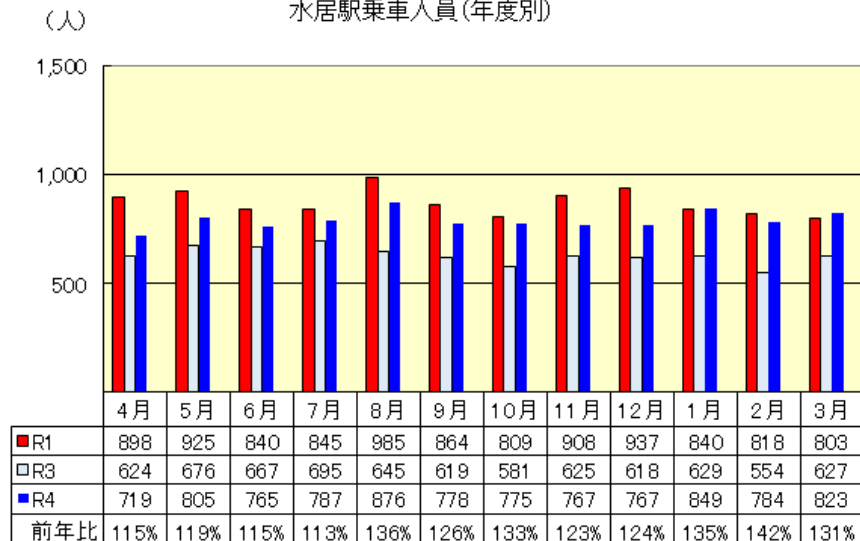


坂井市②

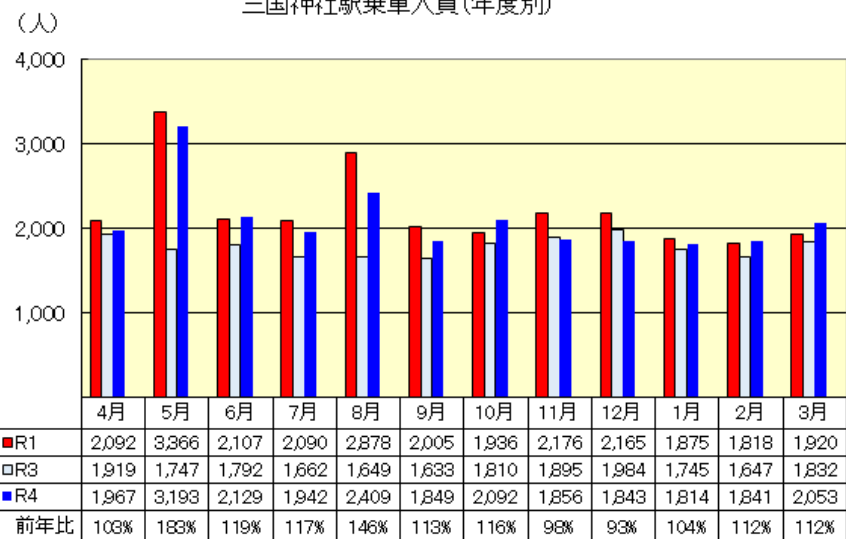
大関駅乗車人員(年度別)



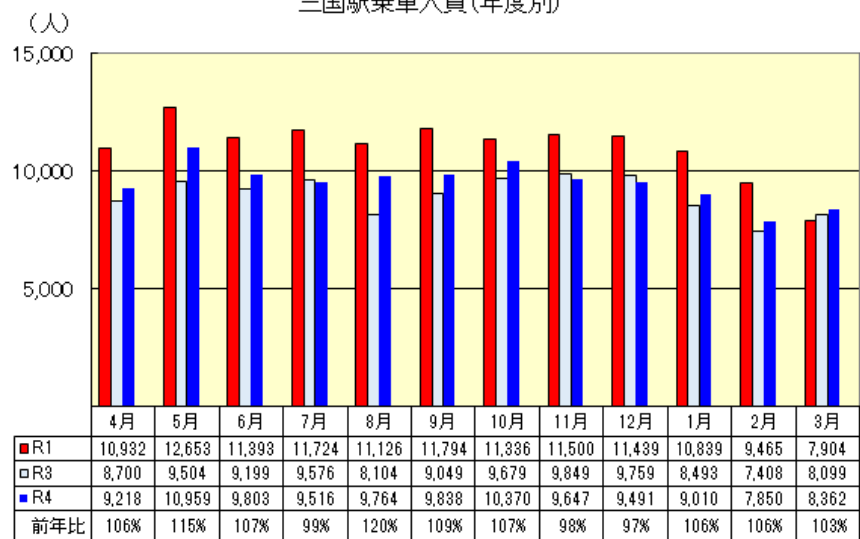
水居駅乗車人員(年度別)



三国神社駅乗車人員(年度別)



三国駅乗車人員(年度別)



坂井市③

三国港乗車人員(年度別)

